

## About Samsung

Samsung Electronics Co., Ltd. is a global leader in technology, opening new possibilities for people everywhere. Through relentless innovation and discovery, we are transforming the world of TVs, smartphones, tablets, PCs, cameras, home appliances, printers, LTE systems, medical devices, semiconductors and LED solutions. We employ 286,000 people across 80 countries with annual sales of US\$216.7 billion. To discover more, please visit [www.samsung.com](http://www.samsung.com).

## For more information

For more information about Samsung GM85, visit [www.samsung.com/healthcare](http://www.samsung.com/healthcare)

CT-GM85 1.2-170316-EN

## Key features of GM85

	GM85
HVG (Generator)	32 kW, 40 kW
Anode angle	14°
Wireless detector	S4335-W, S4343-W, S3025-W

## Optional accessories

Optional accessories in the table below are also available for purchase.

Accessory	Description
Wireless hand switch	The wireless hand switch allows the user to remote-control the system during image capture.
Bar code scanner	Bar code scanning enables easy upload of patient information.
Tether cable	Tether cable enables detector connection for image transmission and charging
Lan cable	Lan cable enables system data transfer to Picture Archiving and Communication System (PACS)
Dose Area Product (DAP)	The DAP meter allows users to benefit from integrated dose reporting to PACS.
Portable grid	The lightweight grid for S4343-W or S4335-W provides effortless use of the wireless detector.
Quality Assurance Program (QAP)	QAP enhances quality control procedures by providing AI filter and phantom.

For more information on optional accessories, please contact a sales representative.

Copyright © 2016 Samsung Electronics Co. Ltd. All rights reserved. Samsung is a registered trademark of Samsung Electronics Co. Ltd. Specifications and designs are subject to change without notice. Non-metric weights and measurements are approximate. All data were deemed correct at time of creation. Samsung is not liable for errors or omissions. All brand, product, service names and logos are trademarks and/or registered trademarks of their respective owners and are hereby recognized and acknowledged.

**SAMSUNG**

# Pioneering Mobile Experience

## Premium Mobile Digital Radiography GM85



**MEDLIGA**  
медицинское оборудование

## Move with ease and improved efficiency

### GM85 delivers:

- ① Easy navigating with compact design
- ② Optimized workflow with enhanced usability
- ③ Advanced imaging for superior image quality



# Easy navigating with compact design

## Ultimate driving experience with advanced mobility



### Always keep compact



### Safe navigation

#### Soft Driving



Light pressure on the handle allows easy speed control and silent driving.

#### Front Bumper Sensor



The sensor on the front bumper automatically stops the device with a short braking distance if a slight pressure is detected.

### Multi-environment use and ease



#### Patient room

Scan patients without moving them to an x-ray room.

#### Emergency room

Diagnose on-site and make quick decisions.

#### Operating room

Gain valuable information that helps in surgery decision-making and save time.

#### Intensive care Unit

Quickly access patients and monitor them after surgeries.

#### Pediatric intensive care unit

Care for infants using long tube reach and pediatric imaging.

# Optimized workflow with enhanced usability

## User-friendly workflow and no downtime

Extensive Long Tube Reach

S-Align\* & Auto Filter\*\*

Detector Storage & Charging



### Ready in a moment



With fast THU booting, radiographers can move the device and check their worklists while traveling after workstation is booted.

### Always convenient



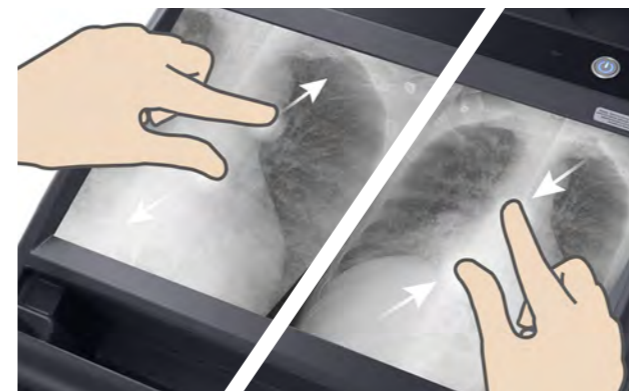
Large storage carries detectors and personal items for convenience. Radiographers can charge detector and detector battery while traveling and Detector locking secures detectors to prevent loss.

### Easy use



Quick Positioning offers handle-free, fine body movement. SID (Source to Image Distance) Guide supports detailed device positioning with multiple SID settings.

### Intuitive multi-touch



Zoom in & Zoom out



Two-Touch Shutter

\* S-Align displays the detector's angle to the THU for precise alignment and enhances the quality of imaging.  
 \*\* Auto Filter automatically sets a type of filters and exposure condition linked with APR without manually changing filters.

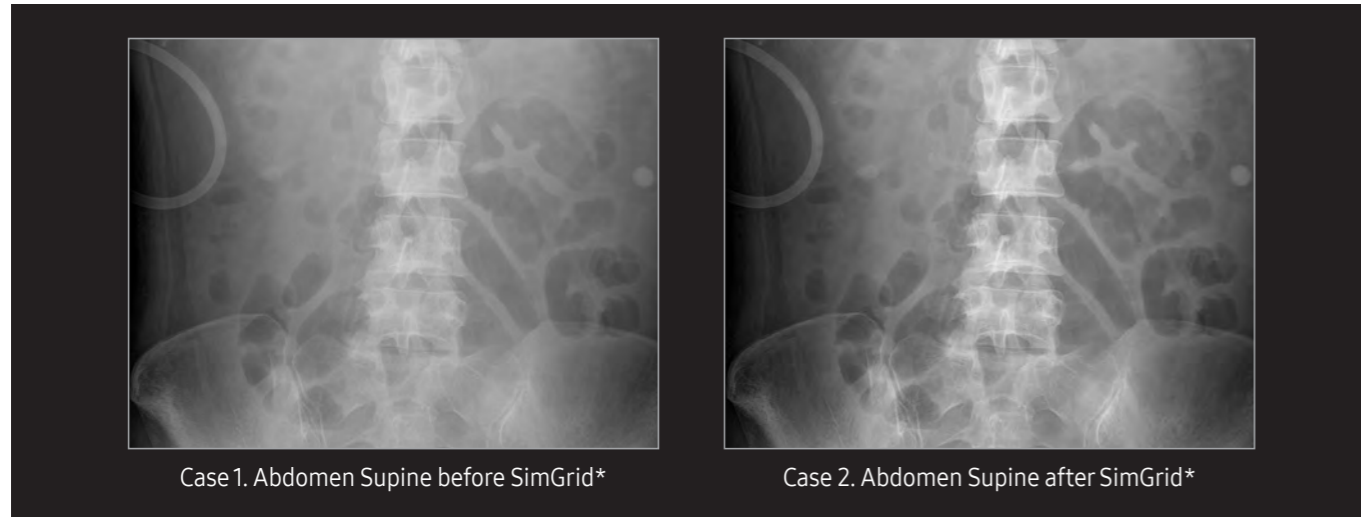
# Advanced imaging for superior image quality

## Advanced patient care with diagnostic confidence

### Streamline the workflow with uncompromising image quality

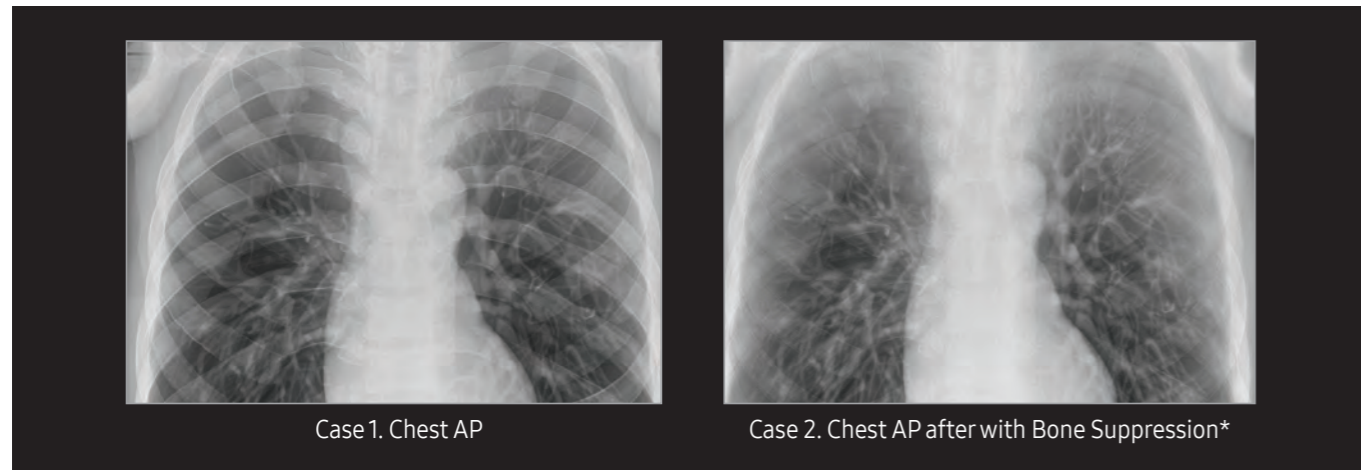
SimGrid\* makes the grid install and removal process from the detector unnecessary, resulting in reduced wrist overload for users. This application produces superior image quality compared to images captured on systems without the use of a conventional grid through a reduction of scatter radiation effects, generating improved image contrast.

In addition, radiographers can provide better patient care with SimGrid as it eliminates alignment errors that often occur with portable grids. This reduces retake rate and patients leave satisfied with their care.



### Bone Suppression\* for better evaluation

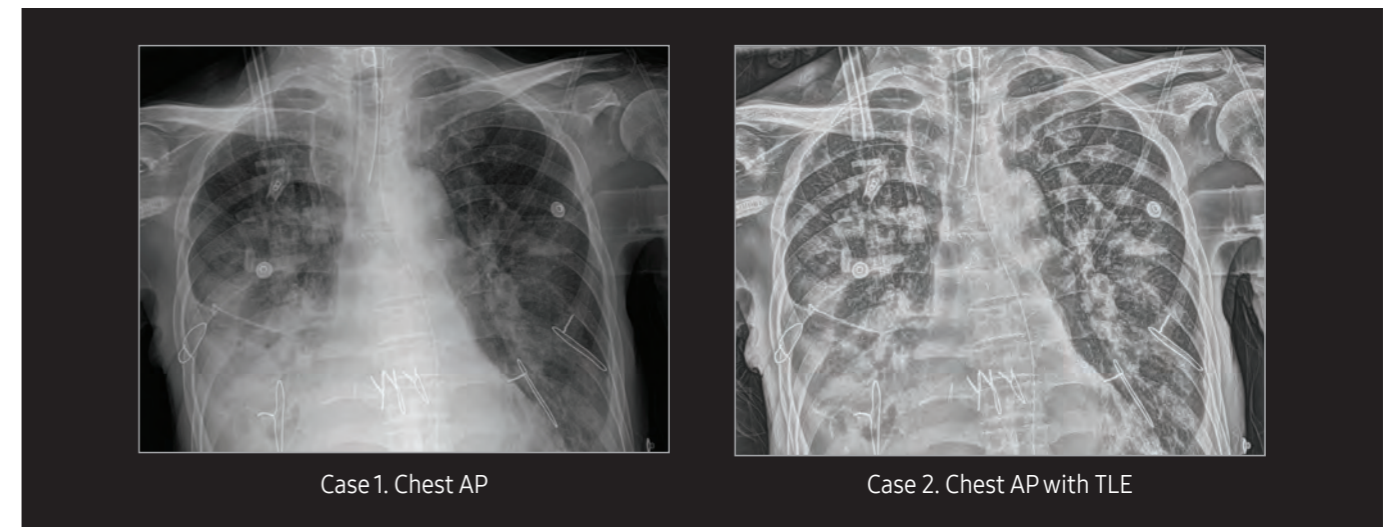
Without additional setting or exposure, Bone Suppression Imaging improves the clarity of soft tissues by suppressing the appearance of bones in chest images, which improves your ability to detect nodules. You can easily create the companion image with just a click on the screen.



\* Optional.

### Tube & Line Enhancement for improved assessment

Improve clarity of tube and line in chest images with Tube & Line Enhancement feature. With a single on-screen click, the companion image is created without additional settings or x-ray exposure, streamlining the process.

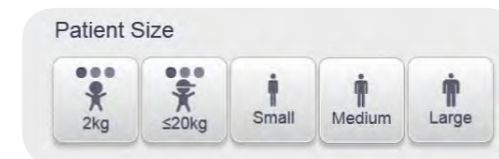


## Sophisticated pediatric care with child-friendly design

### Pediatric Cover Design\*

Child-friendly design stimulates pleasant imagination and provides a playful environment for both parents and children.

### Pediatric Exposure Management



Optimized 6-stage weight dependent imaging enables pediatric patients to avoid unnecessary x-ray exposure with precise dose management.

\* Pediatric Cover Design is optional.



# Improved efficiency with constant support

## Improved diagnostic capability with S-Detector

### High DQE for excellent imaging

S-Detector displays the patient's anatomical structure clearly with improved radiation and spatial resolution as compared to previous indirect type detectors.

### Varying sizes for optimal use

S-Detectors are available in three different sizes (S4335-W, S4343-W and S3025-W), ensuring optimized images for different body parts, such as hand, chest or spine.

### Great durability for reliable operation

S3025-W is water-resistant, protecting from spills and damage resulting from unexpected contact with blood, body fluids and liquid medications, as well as powdered medications.\*



## Strategic investment with S-Share\*\*

S-Detectors (S4335-W, S4343-W and S3025-W) are compatible with Samsung DR systems.

### Adaptability for continuous operation

Samsung DR equipment provides compatible detector usage with Samsung DR systems, enabling greater flexibility for continuous care. This compatibility eliminates downtime by enabling alternate detector use when a detector battery is low.

### Flexibility for cost-efficient solution

S-Share provides cost-efficiency by enabling customizable detector configuration when purchasing GM85. This flexibility satisfies unique clinical needs and provides maximum output from minimal expenditure.

\* S3025-W features International Protection Marking code (IP54)-level protection.

\*\*S-Share is optional.

## Efficient battery offers exceptional support

New battery technology guarantees fast charging and efficient battery management. GM85 powers up to 100% in only 2~4 hours and with a long-lasting battery, gives you the power to keep going for all day without additional charging.

Fast charging time (2~4h)

Moving

Exposure

**All day operation without additional charging**

GM85

## Maintenance solutions : 24/7, 365 days a year

### RMS (Remote Maintenance System)

This system enables continuous monitoring of system errors, with auto-diagnosis of the system and software.

### 24/7 call center\*

The customer support center operates 24/7, 365 days a year to quickly respond to clients' needs.

### Upgrade service

Samsung helps clients use the latest products through optional detector upgrades, along with hardware and software upgrades.

### Service offering

Samsung offers clients the flexibility to choose service support by allowing them to select the coverage that meets their individual requirements.

\* Maintenance service availability may vary by country.

Service countries are Germany, France, Italy, China, Thailand, Turkey, USA and Brazil.



Работайте с лучшими,  
всё остальное компромисс!

---

**8 (800) 775-10-98**

**medliga.ru**