

RHINO-LARYNGO FIBERSCOPE

ENF-T3

2.2 mm Instrument Channel with Increased Brightness and Sharper Resolution



A Valuable Aid For Observation, Diagnosis, And Treatments Such As Biopsy, Aspiration, And Removal Of Foreign Bodies

Remarkable Olympus improvement of brightness and resolution makes viewing with the ENF-T3 more precise and accurate. It is designed for easy orientation to further facilitate delicate procedures.



Resolution Improved Approx. 139%*

Vivid, powerfully precise images can now be obtained thanks to a major increase in image guide fibers. This astounding increase in resolution makes every procedure more accurate even as it reduces eye fatigue.

Brightness Increased Approx. 150%*

Delicate procedures will especially benefit from images that have never been easier to see. With its 85° field of view, the ENF-T3 offers optimal performance for observation from the nasopharynx to vocal cords.

Secure Design

Completely sealed construction of the aspiration plug section assures that foreign matter will never enter the unit. Smooth surface contours further facilitate complete cleaning.

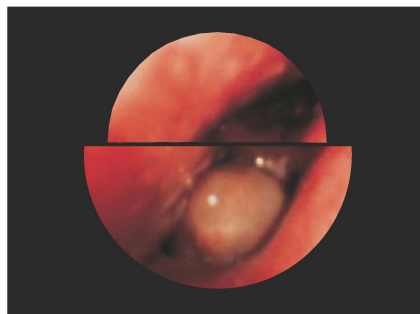


Image Size Increased Approx. 24%*

To the benefits of improved resolution and enhanced brightness, Olympus adds increased image size as well. These three factors combined serve to reduce eye fatigue to an unprecedented degree.

Channel Diameter Increased 0.2 mm*

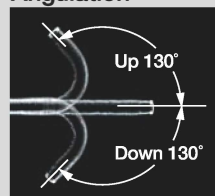
While maintaining the same outside diameter, Olympus has been able to increase the instrument channel from 2.0 mm to 2.2 mm. This modification eases instrument insertion and improves aspiration capabilities.

* As compared to the previous model.

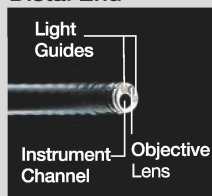
Biopsy Forceps

Fenestrated	Fenestrated With Needle	Ellipsoid	Alligator Jaws
FB-19C-1	FB-34C-1	FB-21C-1	FB-15C-1

Angulation



Distal End



OLYMPUS ENF TYPE T3

Specifications

Optical System	Field Of View	85°
	Direction Of View	Forward viewing
	Depth Of Field	5 - 50 mm
	Illumination Method	Light Guide System
Distal End	Outer Diameter	4.8 mm
Bending Section	Range Of Tip Bending	Up 130°, Down 130°
Insertion Tube	Outer Diameter	5 mm
Working Length		365 mm
Total Length		585 mm
Instrument Channel	Inner Diameter	2.2 mm
Biopsy Forceps	Minimum Visible Distance	5 mm from distal end
Photo Documentation	Still	OES Instant Camera Olympus SCP-10 (with SCP Adapter AR-P10)
		35 mm SLR Camera SC35/OM1n (with OM AE Adapter SM-ER3)
TV	TV	OES TV System
		Olympus OTV-SC/OTV-S5/OTV-S6



Работайте с лучшими,
всё остальное компромисс!

8 (800) 775-10-98

medliga.ru